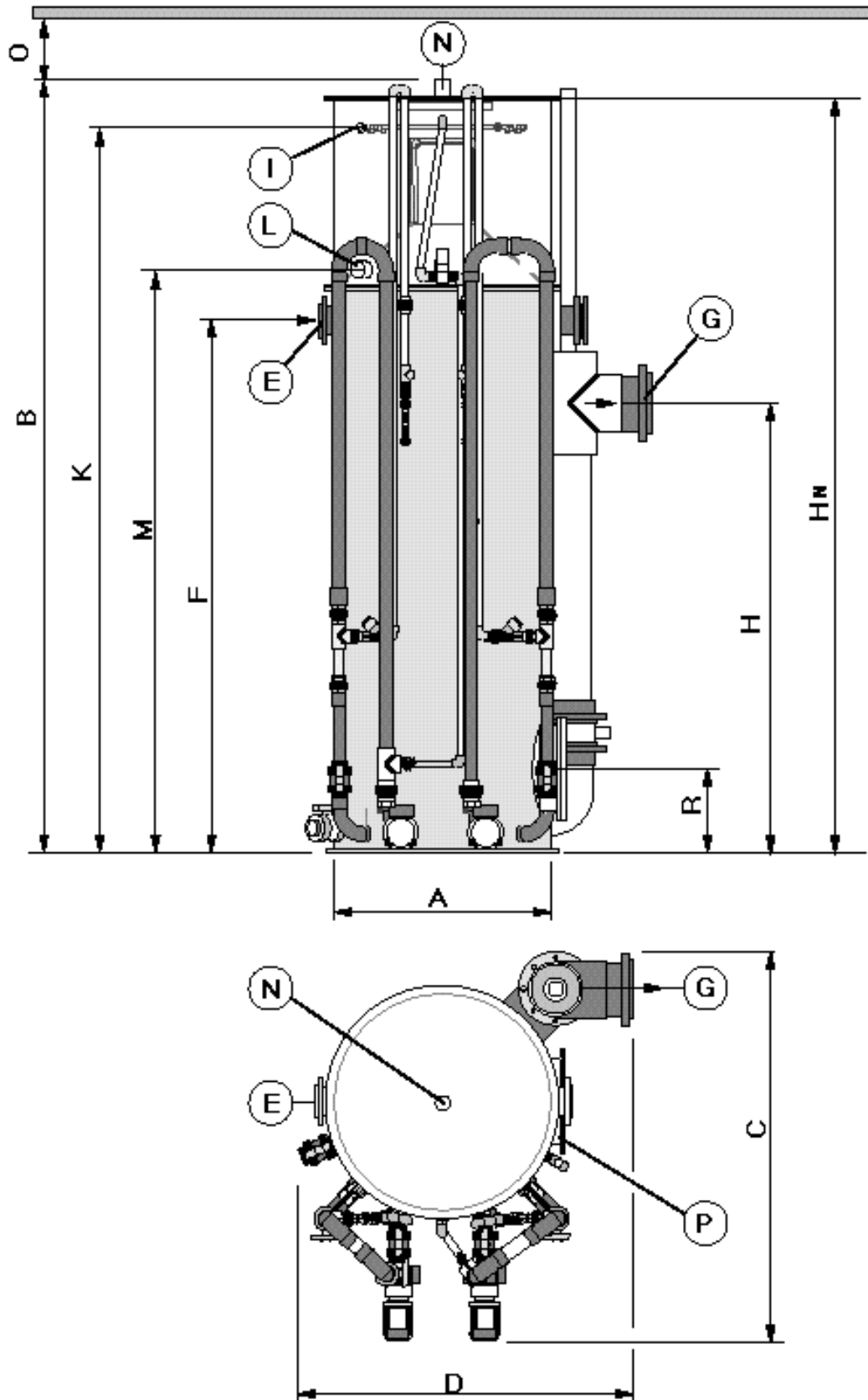


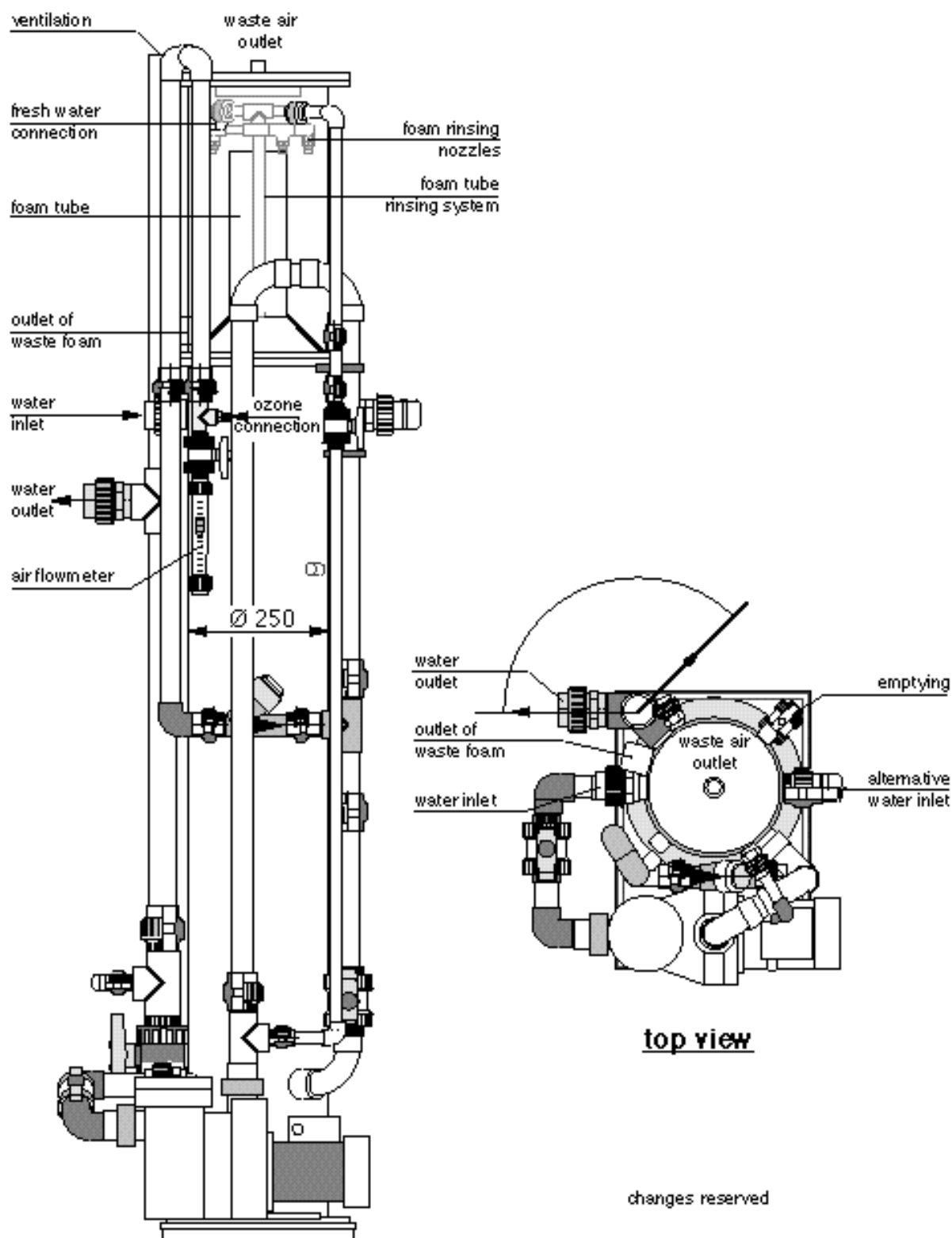
# Protein Skimmer



Standard Dimensional Drawing  
Skimmer Type Helgoland



## Helgoland 250



# Protein Skimmer



## Helgoland 250

Item No. .9.250		
Nominal Height H <sub>N</sub>		2000
Water Flow Rate	m <sup>3</sup> /h	4
Retention Time	min	1
<b>Water Flow Rate*</b>	<b>m<sup>3</sup>/h</b>	<b>3</b>
<b>Retention Time*</b>	<b>min</b>	<b>1,50</b>
Water Flow Rate	m <sup>3</sup> /h	2
Retention Time	min	2
Air Intake Capacity	m <sup>3</sup> /h	1,4
Water Volume	l	75
Operating Weight approx.	kg	110
Number of Injection Units	pc	1
Total Power Demand	kW	0,25
Water Demand of the Foam Rinsing	l/h	4,7
Dimensions:		
A	Diameter	mm 250
B	Total Height	mm 2150
C	Breadth	mm 550
D	Depth	mm 600
O	Free Height	mm >300
E	Inlet ø	mm d 40
F	Inlet Height	mm 1470
G	Outlet ø	mm d 50
H	Outlet Height	mm 1400
i	Rinsing Water ø	mm d 20
K	Rinsing Water Height	mm 1980
L	Foam Outlet ø	mm d 50
M	Foam Outlet Height	mm 1620
N	Residual Air Outlet ø	mm d 25

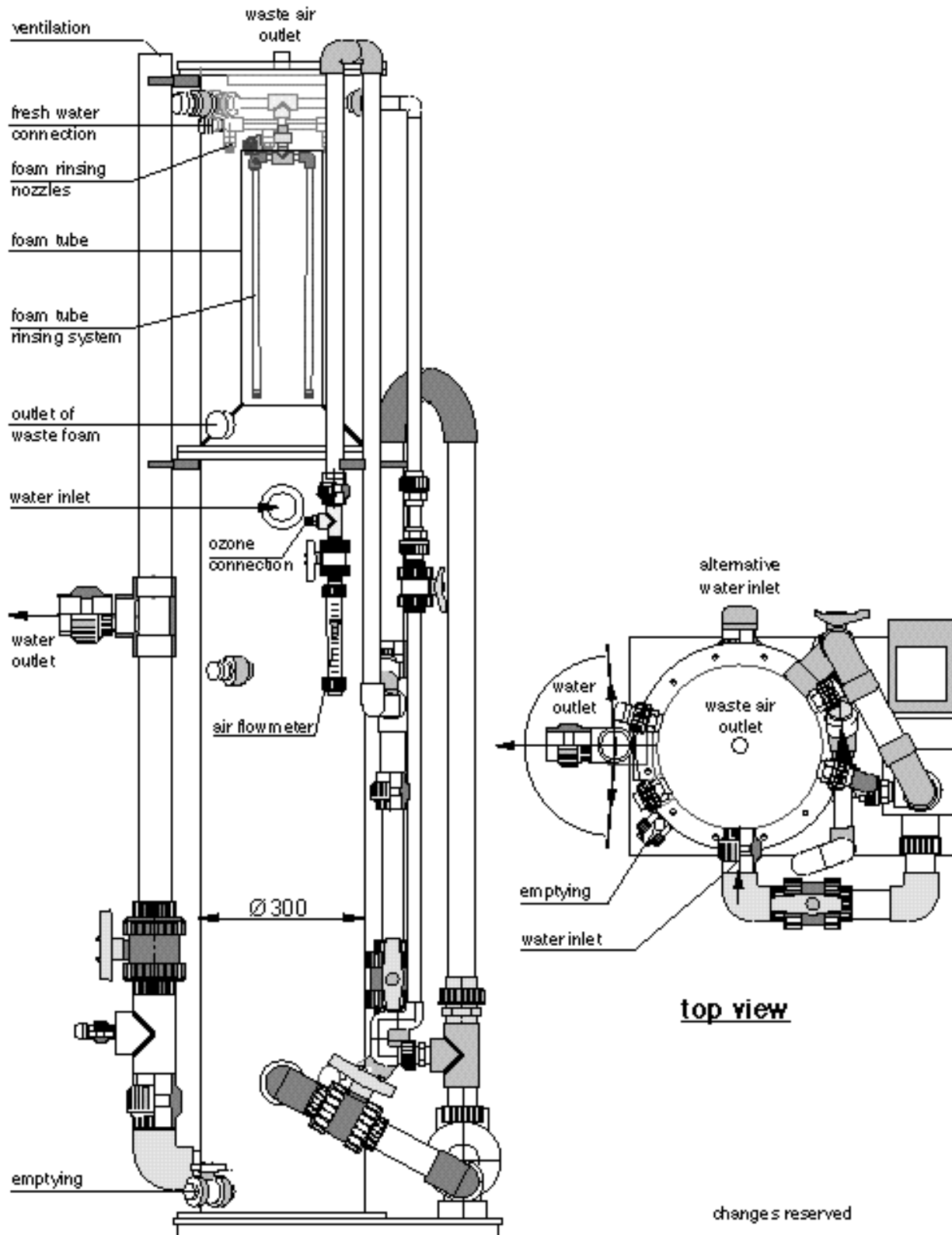
Material	Standard	Optional
Reaction Tank	Plexiglass/Acrylic Glass	Polypropylen/Polyethylen/GRP
Foam Beaker	Plexiglass/Acrylic Glass	
Screws, Nuts	Stainless Steel1.4301	
Pumps	PP/Glass Fibre	
Face Seal Rings	Carbon/Ceramic/Viton	

Different Dimensions can be realized  
\* Recommended Values

Technical Details subject to Alterations

# Protein Skimmer

## Helgoland 300



# Protein Skimmer



## Helgoland 300

Item No. .9.300  
Nominal Height H<sub>N</sub>

2000

Water Flow Rate	m <sup>3</sup> /h	6
Retention Time	min	1

<b>Water Flow Rate*</b>	<b>m<sup>3</sup>/h</b>	<b>4</b>
<b>Retention Time *</b>	<b>min</b>	<b>1,5</b>

Water Flow Capacity	m <sup>3</sup> /h	3
Retention Time	min	2

Air Intake Volume	m <sup>3</sup> /h	2,8
Water Volume	l	100
Operating Weight approx.	kg	165
Number of Injection Units	pc	1

Total Power Demand	kW	0,45
Water Demand of the Foam Rinsing	l/h	4,7

### Dimensions:

A	Diameter	mm	300
B	Total Height	mm	2200
C	Breadth	mm	600
D	Depth	mm	680
O	Free Height	mm	>300

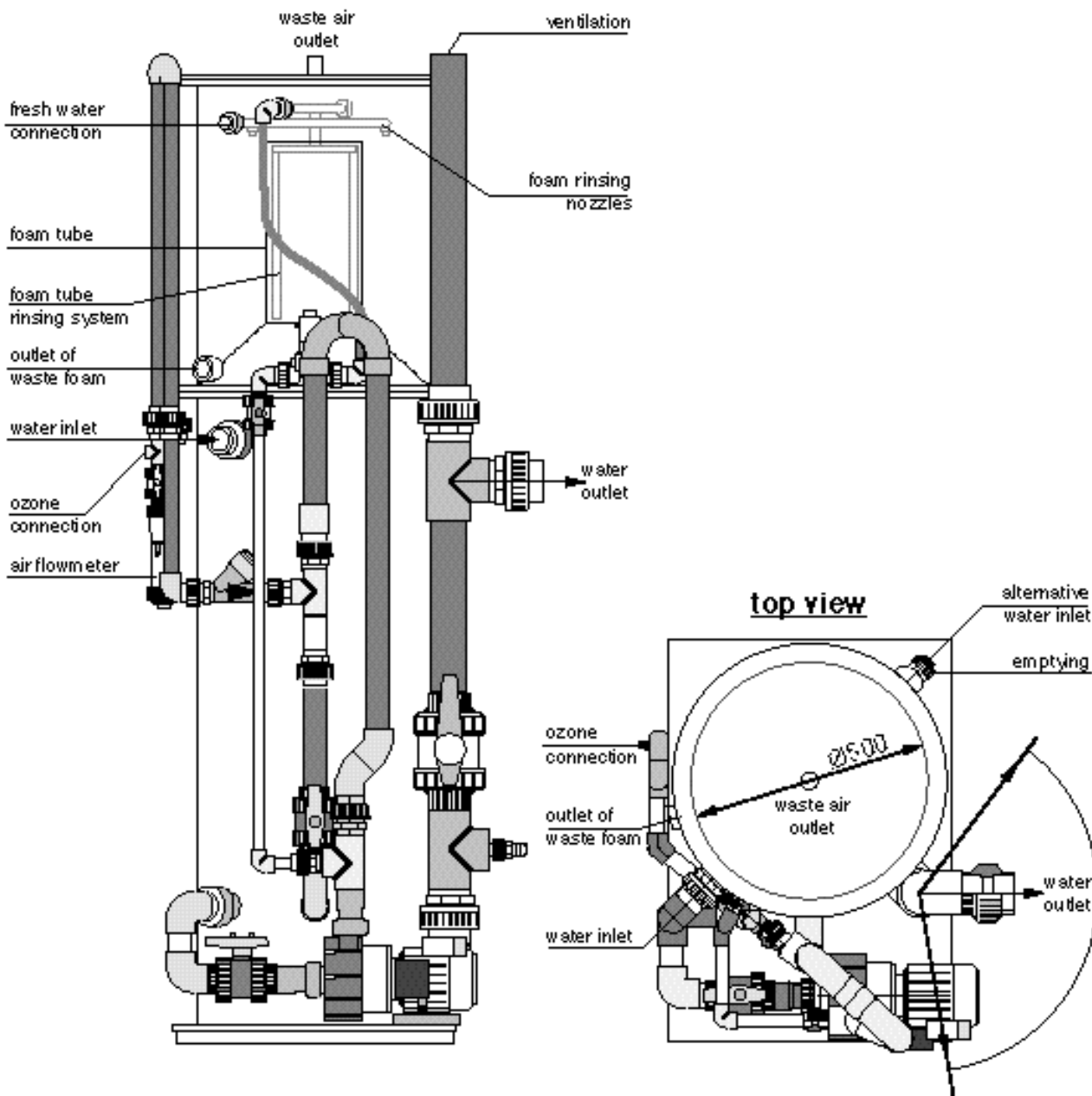
E	Inlet ø	mm	d 50
F	Inlet Height	mm	1300
G	Outlet ø	mm	d 63
H	Outlet Height	mm	1100
i	Rinsing Water ø	mm	d 20
K	Rinsing Water Height	mm	2040
L	Foam Outlet ø	mm	d 50
M	Foam Outlet Height	mm	1490
N	Residual Air Outlet ø	mm	d 25

Material	Standard	Optional
Reaction Tank	Plexiglass/Acrylic Glass	Polypropylen/Polyethylen/GRP
Foam Beaker	Plexiglass/Acrylic Glass	
Screws, Nuts	Stainless Steel1.4301	
Pumps	PP/Glass Fibre	
Face Seal Rings	Carbon/Ceramic/Viton	

Different Dimensions can be realized  
\* Recommended Values

Technical Details subject to Alterations

## Helgoland 500



# Protein Skimmer



## Helgoland 500

Item No. .9.500.2000

Nominal Height  $H_N$  2000

Water Flow Rate  $m^3/h$  16,5

Retention Time min 1

**Water Flow Rate\***  $m^3/h$  **11**

**Retention Time \*** min **1,5**

Water Flow Rate  $m^3/h$  8

Retention Time min 2

Air Intake Capacity  $m^3/h$  5

Water Volume l 270

Operating Weight approx. kg 400

Number of Injection Units pc 1

Total Power Demand kW 0,85

Water Demand of the Foam Rinsing l/h 4,7

### Dimensions:

A Diameter mm 500

B Total Height mm 2100

C Breadth mm 900

D Depth mm 750

O Free Height mm >300

E Inlet  $\varnothing$  mm d 50

F Inlet Height mm 1280

G Outlet  $\varnothing$  mm d 75

H Outlet Height mm 1150

i Rinsing Water  $\varnothing$  mm d 20

K Rinsing Water Height mm 1950

L Foam Outlet  $\varnothing$  mm d 50

M Foam Outlet Height mm 1430

N Residual Air Outlet  $\varnothing$  mm d 32

### Material

Reaction Tank Plexiglass/Acrylic Glass

Foam Beaker Plexiglass/Acrylic Glass

Screws, Nuts Stainless Steel 1.4301

Pumps PP/Glass Fibre

Face Seal Rings Carbon/Ceramic/Viton

### Optional

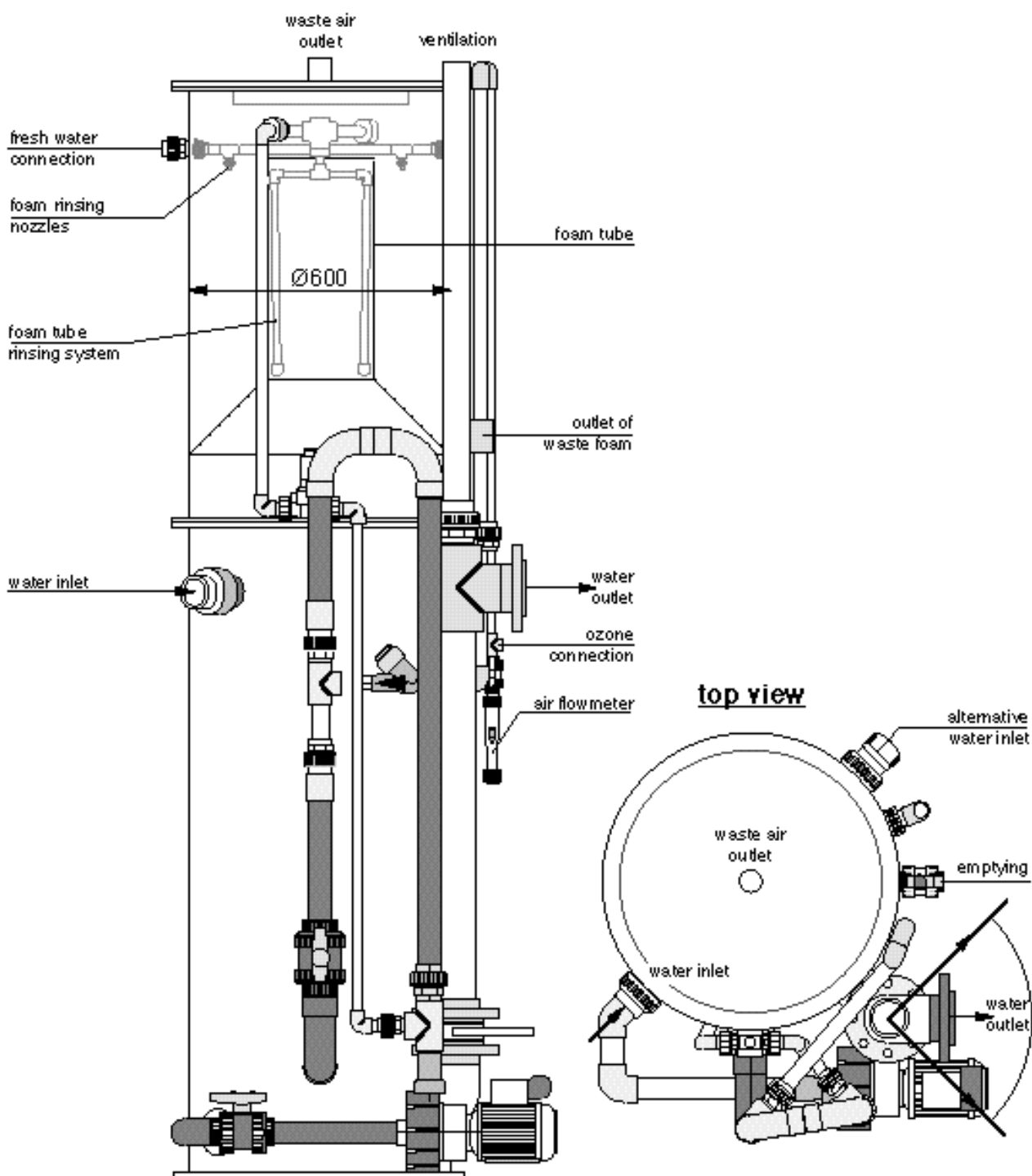
Polypropylen/Polyethylen/GRP

Different Dimensions can be realized

\* Recommended Values

Technical Details subject to Alterations

## Helgoland 600



# Protein Skimmer



## Helgoland 600

Item No. .9.600.H <sub>N</sub>					
Nominal Height H <sub>N</sub>		2000	2500	3000	
Water Flow Rate	m <sup>3</sup> /h	24	28	34	
Retention Time	min	1	1	1	
<b>Water Flow Rate*</b>	<b>m<sup>3</sup>/h</b>	<b>16</b>	<b>19</b>	<b>23</b>	
<b>Retention Time *</b>	<b>min</b>	<b>1,5</b>	<b>1,5</b>	<b>1,5</b>	
Water Flow Rate	m <sup>3</sup> /h	12	14	17	
Retention Time	min	2	2	2	
Air Intake Capacity	m <sup>3</sup> /h	6	6	6	
Water Volume	l	280	470	570	
Operating Weight approx.	kg	450	680	780	
Number of Injection Units	pc	1	1	1	
Total Power Demand	kW	1,1	1,1	1,1	
Water Demand of the Foam Rinsing	l/h	7	7	7	
Dimensions:					
A	Diameter	mm	600	600	600
B	Inlet Height	mm	2080	2580	3080
C	Breadth	mm	950	950	950
D	Depth	mm	900	900	900
O	Free Height	mm	>300	>300	>300
E	Inlet ø	mm	d 63	d 63	d 63
F	Inlet Height	mm	910	1410	1910
G	Outlet ø	mm	d 90	d 90	d 90
H	Outlet Height	mm	850	1350	1850
i	Rinsing Water ø	mm	d 25	d 25	d 25
K	Rinsing Water Height	mm	1850	2350	2850
L	Foam Outlet ø	mm	d 75	d 75	d 75
M	Foam Outlet Height	mm	1155	1655	2155
N	Residual Air Outlet ø	mm	d 50	d 50	d 50

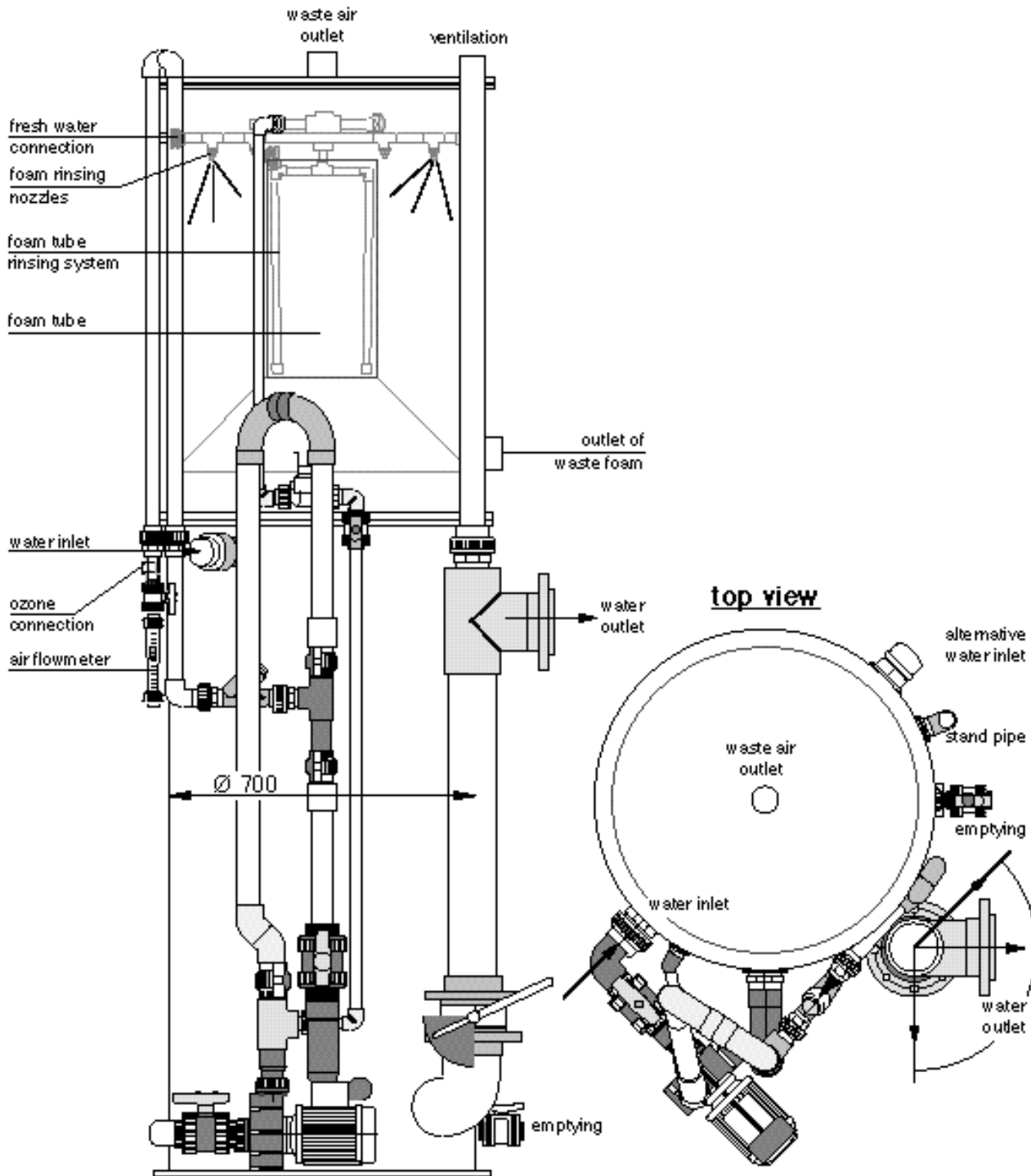
Material	Standard	Optional
Reaction Tank	Polypropylen/grey	Polyethylen/GRP
Foam Beaker	PVC-transparent	
Screws, Nuts	Stainless Steel 1.4301	
Pumps	PP/Glass Fibre	
Face Seal Rings	Carbon/Ceramic/Viton	

Different Dimensions can be realized

\* Recommended Values

Technical Details subject to Alterations

## Helgoland 700



# Protein Skimmer



## Helgoland 700

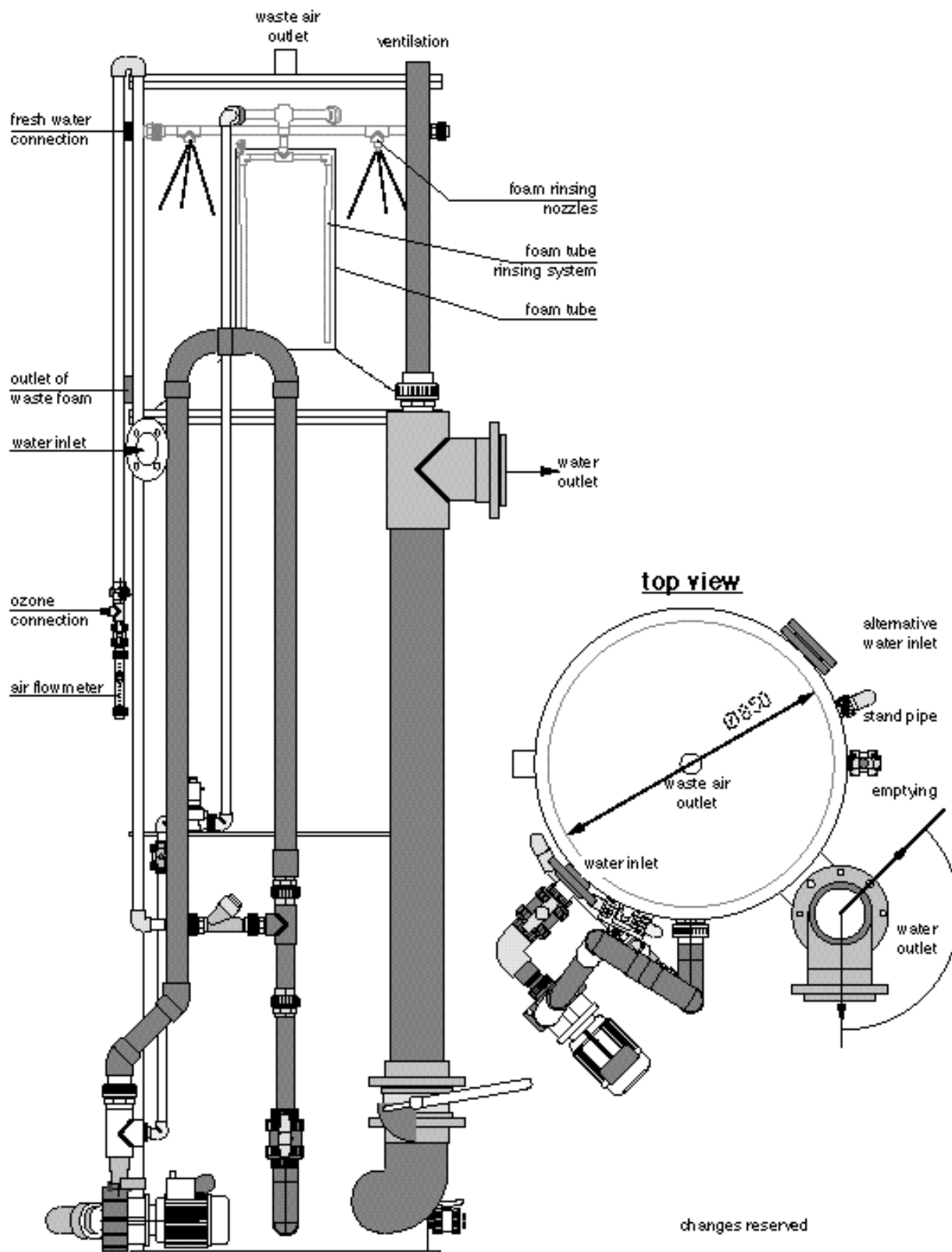
Item No. .9.700.H <sub>N</sub>				
Nominal Height H <sub>N</sub>		2500	3000	3500
Water Flow Rate	m <sup>3</sup> /h	38	46	55
Retention Time	min	1	1	1
<b>Water Flow Rate*</b>	<b>m<sup>3</sup>/h</b>	<b>25</b>	<b>31</b>	<b>37</b>
<b>Retention Time*</b>	<b>min</b>	<b>1,5</b>	<b>1,5</b>	<b>1,5</b>
Water Flow Rate	m <sup>3</sup> /h	19	23	28
Retention Time	min	2	2	2
Air Intake Capacity	m <sup>3</sup> /h	9	9	9
Water Volume	l	630	770	920
Operating Weight approx.	kg	880	1050	1250
Number of Injection Units	pc	1	1	1
Total Power Demand	kW	1,1	1,1	1,1
Water Demand of the Foam Rinsing	l/h	7	7	7
Dimensions:				
A Diameter	mm	700	700	700
B Total Height	mm	2580	3080	3580
C Breadth	mm	1250	1250	1250
D Depth	mm	900	900	900
O Free Height	mm	>300	>300	>300
E Inlet ø	mm	d 63	d 63	d 75
F Inlet Height	mm	1410	1910	2400
G Outlet ø	mm	d 110	d 110	d 110
H Outlet Height	mm	1350	1850	2350
i Rinsing Water ø	mm	d 25	d 25	d 25
K Rinsing Water Height	mm	2350	2850	3350
L Foam Outlet ø	mm	d 75	d 75	d 75
M Foam Outlet Height	mm	1655	2155	2655
N Residual Air Outlet ø	mm	d 50	d 50	d 50

Material	Standard	Optional
Reaction Tank	Polypropylen/grey	Polyethylen/GRP
Foam Beaker	PVC-transparent	
Screws, Nuts	Stainless Steel 1.4301	
Pumps	PP/Glass Fibre	
Face Seal Rings	Carbon/Ceramic/Viton	

Different Dimensions can be realized  
 \* Recommended Values

Technical Details subject to Alterations

## Helgoland 850



# Protein Skimmer



## Helgoland 850

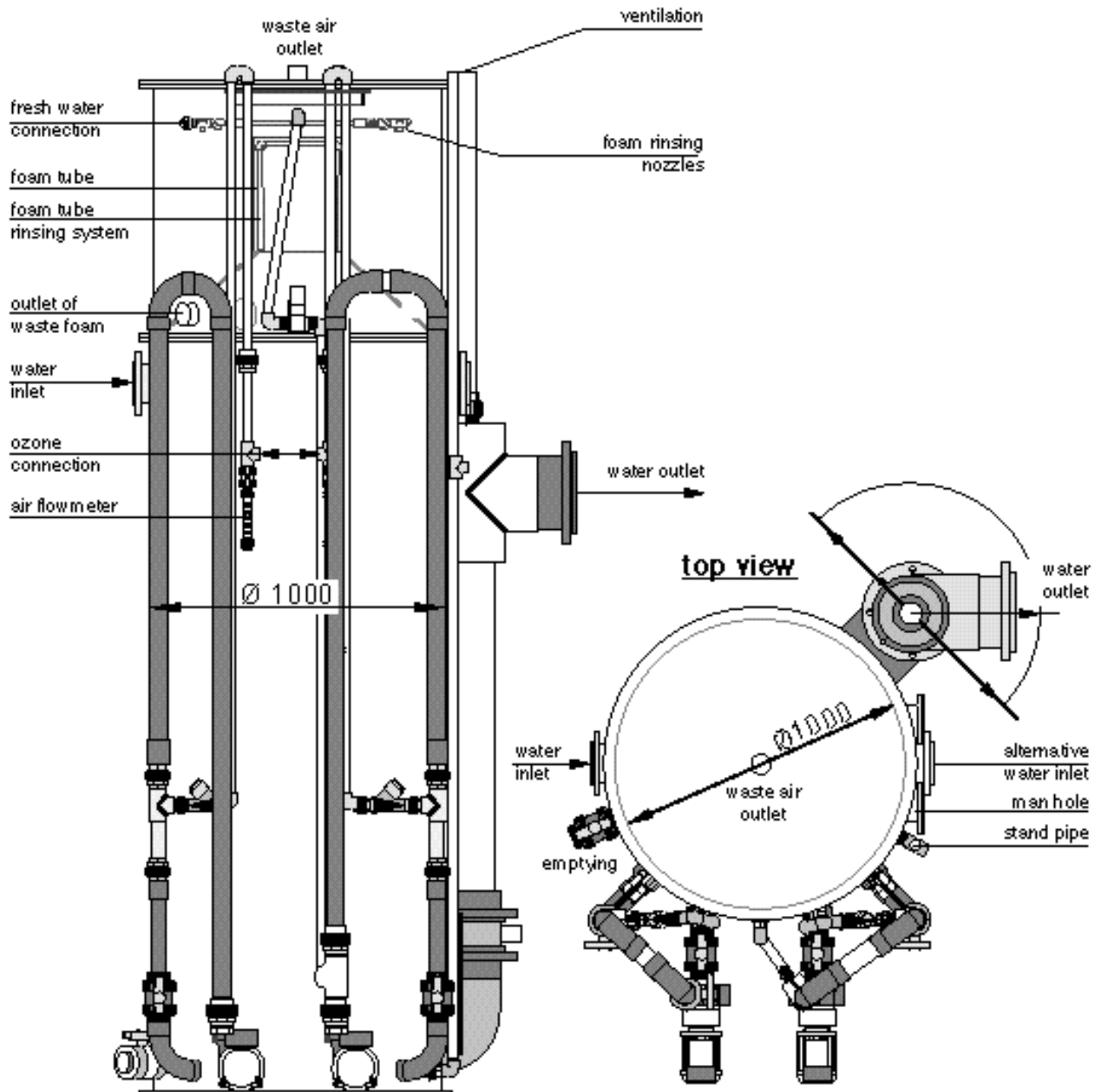
Item No. .9.850.H <sub>N</sub>		2500	3000	3500	4000	4500
Nominal Height H <sub>N</sub>		2500	3000	3500	4000	4500
Water Flow Rate	m <sup>3</sup> /h	51	68	82	102	119
Retention Time	min	1	1	1	1	1
<b>Water Flow Rate*</b>	<b>m<sup>3</sup>/h</b>	<b>34</b>	<b>45</b>	<b>54</b>	<b>68</b>	<b>79</b>
<b>Retention Time *</b>	<b>min</b>	<b>1,5</b>	<b>1,5</b>	<b>1,5</b>	<b>1,5</b>	<b>1,5</b>
Water Flow Rate	m <sup>3</sup> /h	26	34	41	51	60
Retention Time	min	2	2	2	2	2
Air Intake Capacity	m <sup>3</sup> /h	13	13	13	13	13
Water Volume	l	850	1130	1360	1700	2000
Operating Weight approx.	kg	1250	1550	1800	2200	2500
Number of Injection Units	pc	1	1	1	1	1
Total Power Demand	kW	1,4	1,4	1,4	1,4	1,4
Water Demand of the Foam Rinsing	l/h	7	7	7	7	7
Dimensions:						
A	Diameter	mm	850	850	850	850
B	Total Height	mm	2580	3080	3580	4080
C	Breadth	mm	1500	1500	1500	1500
D	Depth	mm	1200	1200	1200	1200
O	Free Height	mm	>300	>300	>300	>300
E	Inlet ø	mm	d 75	d 90	d 90	d 110
F	Inlet Height	mm	1400	1900	2400	2900
G	Outlet ø	mm	d 160	d 160	d 160	d 160
H	Outlet Height	mm	1350	1850	2350	2850
i	Rinsing Water ø	mm	d 32	d 32	d 32	d 32
K	Rinsing Water Height	mm	2345	2845	3345	3845
L	Foam Outlet ø	mm	d 75	d 75	d 75	d 75
M	Foam Outlet Height	mm	1580	2080	2580	3080
N	Residual Air Outlet ø	mm	d 50	d 50	d 50	d 50

Material	Standard	Optional
Reaction Tank	Polypropylen/grey	Polyethylen/GRP
Foam Beaker	PVC-transparent	
Screws, Nuts	Stainless Steel 1.4301	
Pumps	PP/Glass Fibre	
Face Seal Rings	Carbon/Ceramic/Viton	

Different Dimensions can be realized  
 \* Recommended Values

Technical Details subject to Alterations

## Helgoland 1000



# Protein Skimmer



## Helgoland 1000

Item No. .9.1000.H<sub>N</sub>

Nominal Height H <sub>N</sub>		2500	3000	3500	4000	4500
Water Flow Rate	m <sup>3</sup> /h	71	94	113	141	165
Retention Time	min	1	1	1	1	1
<b>Water Flow Rate*</b>	<b>m<sup>3</sup>/h</b>	<b>47</b>	<b>63</b>	<b>75</b>	<b>94</b>	<b>110</b>
<b>Retention Time*</b>	<b>min</b>	<b>1,5</b>	<b>1,5</b>	<b>1,5</b>	<b>1,5</b>	<b>1,5</b>
Water Flow Rate	m <sup>3</sup> /h	35	47	57	71	83
Retention Time	min	2	2	2	2	2
Air Intake Capacity	m <sup>3</sup> /h	18	18	18	18	18
Water Volume	l	1180	1570	1900	2360	2750
Operating Weight approx.	kg	1650	2100	2500	3100	3500
Number of Injection Units	pc	2	2	2	2	2
Total Power Demand	kW	2,2	2,2	2,2	2,2	2,2
Water Demand of the Foam Rinsing	l/h	9,4	9,4	9,4	9,4	9,4

Dimensions:

A	Diameter	mm	1000	1000	1000	1000	1000
B	Total Height	mm	2580	3080	3580	4080	4580
C	Breadth	mm	1850	1850	1850	1850	1850
D	Depth	mm	1500	1500	1500	1500	1500
O	Free Height	mm	>300	>300	>300	>300	>300
E	Inlet ø	mm	d 90	d 110	d 110	d 110	d 160
F	Inlet Height	mm	1180	1680	2180	2680	3180
G	Outlet ø	mm	d 160	d 160	d 160	d 225	d 225
H	Outlet Height	mm	1100	1600	2100	2600	3100
i	Rinsing Water ø	mm	d 32	d 32	d 32	d 32	d 32
K	Rinsing Water Height	mm	2345	2845	3345	3845	4345
L	Foam Outlet ø	mm	d 110	d 110	d 110	d 110	d 110
M	Foam Outlet Height	mm	1426	1956	2456	2956	3456
N	Residual Air Outlet ø	mm	d 63	d 63	d 63	d 63	d 63
P	Manhole ø	mm	d 400	d 400	d 400	d 400	d 400
R	Manhole Height	mm	700	700	700	700	700

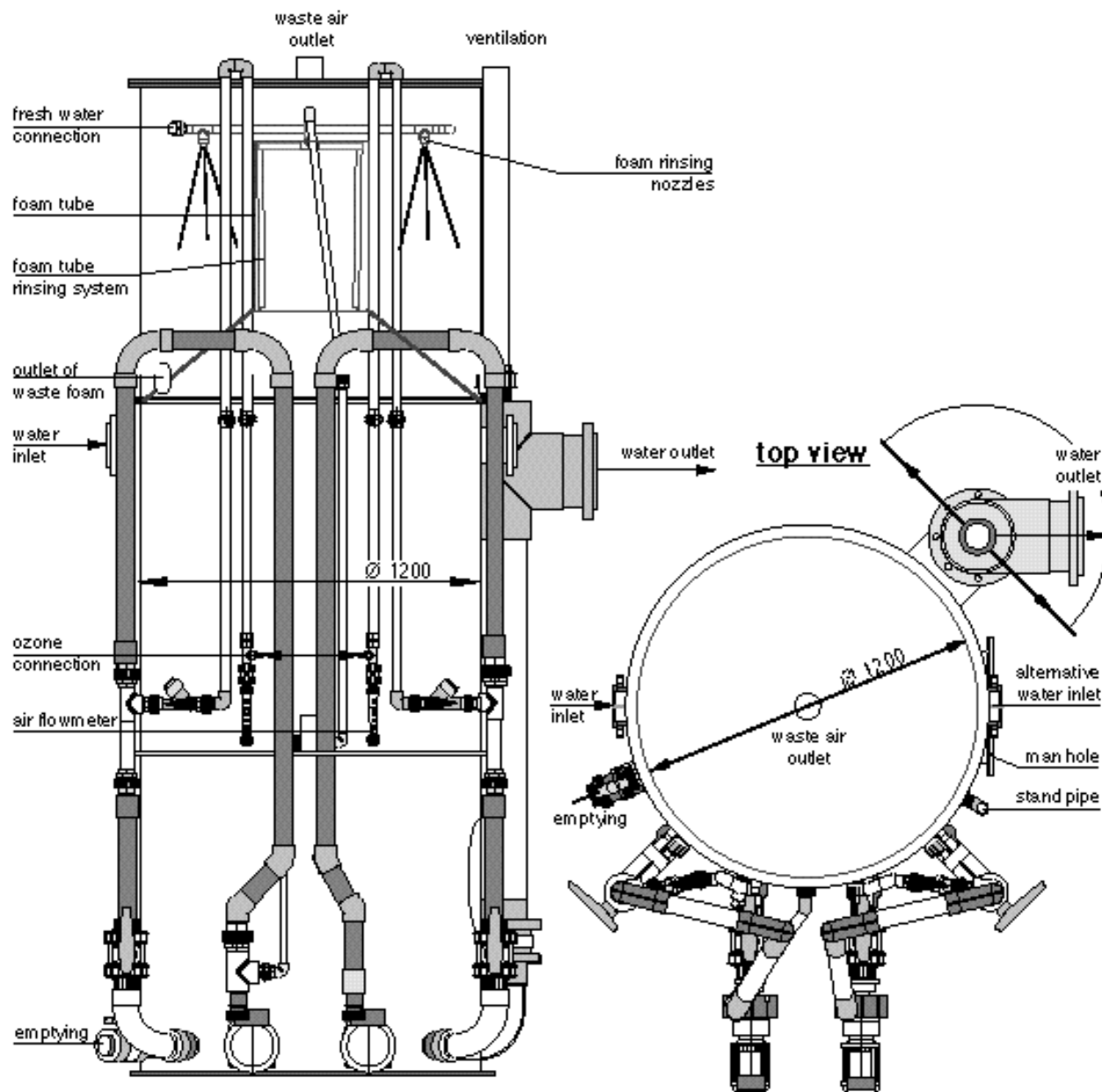
Material	Standard	Optional
Reaction Tank	Polypropylen/grey	Polyethylen/GRP
Foam Beaker	PVC-transparent	
Screws, Nuts	Stainless Steel1.4301	
Pumps	PP/Glass Fibre	
Face Seal Rings	Carbon/Ceramic/Viton	

Different Dimensions can be realized

\* Recommended Values

Technical Details subject to Alterations

## Helgoland 1200



# Protein Skimmer



## Helgoland 1200

Item No. .9.1200.H<sub>N</sub>

Nominal Height H <sub>N</sub>		2500	3000	3500	4000	4500
Water Flow Rate	m <sup>3</sup> /h	102	136	163	204	238
Retention Time	min	1	1	1	1	1
<b>Water Flow Rate*</b>	<b>m<sup>3</sup>/h</b>	<b>68</b>	<b>90</b>	<b>109</b>	<b>134</b>	<b>159</b>
<b>Retention Time *</b>	<b>min</b>	<b>1,5</b>	<b>1,5</b>	<b>1,5</b>	<b>1,5</b>	<b>1,5</b>
Water Flow Rate	m <sup>3</sup> /h	51	68	81	102	119
Retention Time	min	2	2	2	2	2
Air Intake Capacity	m <sup>3</sup> /h	27	27	27	27	27
Water Volume	l	1700	2250	2750	3400	4000
Operating Weight approx.	kg	2400	3100	3700	4400	5000
Number of Injection Units	pc	2	2	2	2	2
Total Power Demand	kW	2,8	2,8	2,8	2,8	2,8
Water Demand of the Foam Rinsing	l/h	9,4	9,4	9,4	9,4	9,4

Dimensions:

A	Diameter	mm	1200	1200	1200	1200	1200
B	Total Height	mm	2580	3080	3580	4080	4580
C	Breadth	mm	2200	2200	2200	2200	2200
D	Depth	mm	1700	1700	1700	1700	1700
O	Free Height	mm	>300	>300	>300	>300	>300
E	Inlet ø	mm	d 110	125	160	160	160
F	Inlet Height	mm	1200	1700	2200	2700	3200
G	Outlet ø	mm	d 225	d 225	d 225	d 225	d 225
H	Outlet Height	mm	1100	1600	2100	2600	3100
i	Rinsing Water ø	mm	d 32	d 32	d 32	d 32	d 32
K	Rinsing Water Height	mm	2345	2845	3345	3845	4345
L	Foam Outlet ø	mm	d 110	d 110	d 110	d 110	d 110
M	Foam Outlet Height	mm	1491	1991	2491	2941	3491
N	Residual Air Outlet ø	mm	d 90	d 90	d 90	d 90	d 90
P	Manhole ø	mm	d 400	d 400	d 400	d 400	d 400
R	Manhole Height	mm	700	700	700	700	700

Material	Standard	Optional
Reaction Tank	Polypropylen/grey	Polyethylen/GRP
Foam Beaker	PVC-transparent	
Screws, Nuts	Stainless Steel 1.4301	
Pumps	PP/Glass Fibre	
Face Seal Rings	Carbon/Ceramic/Viton	

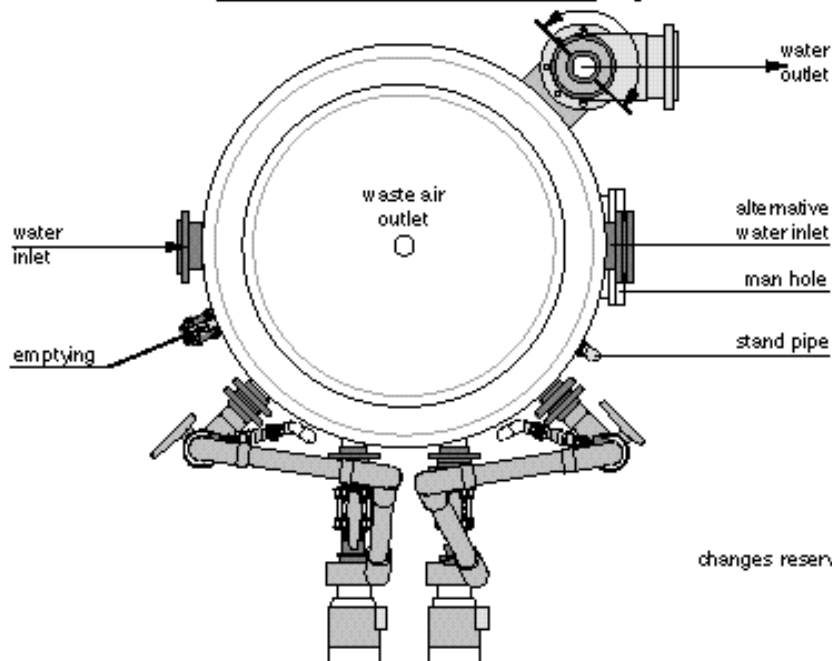
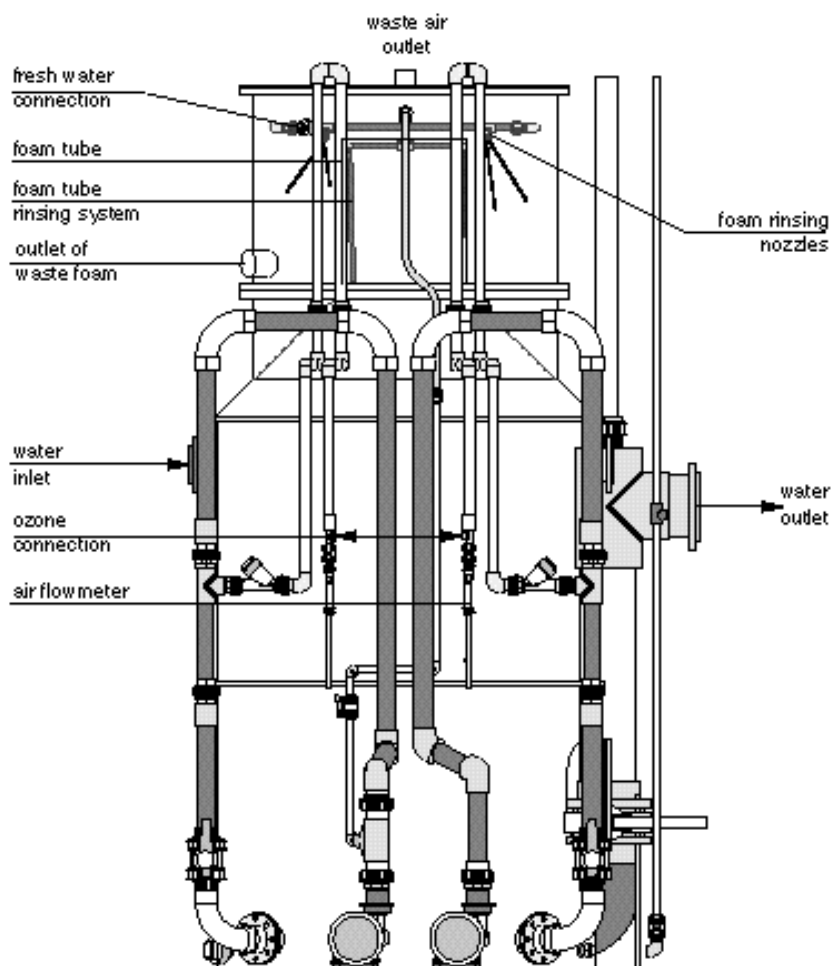
Different Dimensions can be realized

\* Recommended Values

Technical Details subject to Alterations

# Protein Skimmer

## Helgoland 1500



changes reserved

# Protein Skimmer



## Helgoland 1500

Item No. .9.1500.H<sub>N</sub>

Nominal Height H <sub>N</sub>		3000	3500	4000	4500	5000
Water Flow Rate	m <sup>3</sup> /h	212	254	318	371	424
Retention Time	min	1	1	1	1	1
<b>Water Flow Rate*</b>	<b>m<sup>3</sup>/h</b>	<b>141</b>	<b>170</b>	<b>212</b>	<b>247</b>	<b>283</b>
<b>Retention Time *</b>	<b>min</b>	<b>1,5</b>	<b>1,5</b>	<b>1,5</b>	<b>1,5</b>	<b>1,5</b>
Water Flow Rate	m <sup>3</sup> /h	106	127	159	186	212
Retention Time	min	2	2	2	2	2
Air Intake Capacity	m <sup>3</sup> /h	42	42	42	42	42
Water Volume	l	3500	4250	5300	6200	7100
Operating Weight approx.	kg	4800	5600	6800	7800	8800
Number of Injection Units	pcs	2	2	2	2	2
Total Power Demand	kW	7,6	7,6	7,6	7,6	7,6
Water Demand of the Foam Rinsing	l/h	9,4	9,4	9,4	9,4	9,4

Dimensions:

A	Diameter	mm	1500	1500	1500	1500	1500
B	Total Height	mm	3080	3580	4080	4580	5080
C	Breadth	mm	2600	2600	2600	2600	2600
D	Depth	mm	2000	2000	2000	2000	2000
O	Free Height	mm	>300	>300	>300	>300	>300
E	Inlet ø	mm	d 160	d 160	d 160	d 160	d 225
F	Inlet Height	mm	1500	2000	2500	3000	3500
G	Outlet ø	mm	d 225	d 225	d 250	d 250	d 315
H	Outlet Height	mm	1400	1900	2400	2900	3400
i	Rinsing Water ø	mm	d 32	d 32	d 32	d 32	d 32
K	Rinsing Water Height	mm	2845	3345	3845	4345	4845
L	Foam Outlet ø	mm	d 110	d 110	d 110	d 110	d 110
M	Foam Outlet Height	mm	2290	2790	3300	3800	4300
N	Residual Air Outlet ø	mm	d 90	d 90	d 90	d 90	d 90
P	Manhole ø	mm	d 400	d 400	d 400	d 400	d 400
R	Manhole Height	mm	700	700	700	700	700

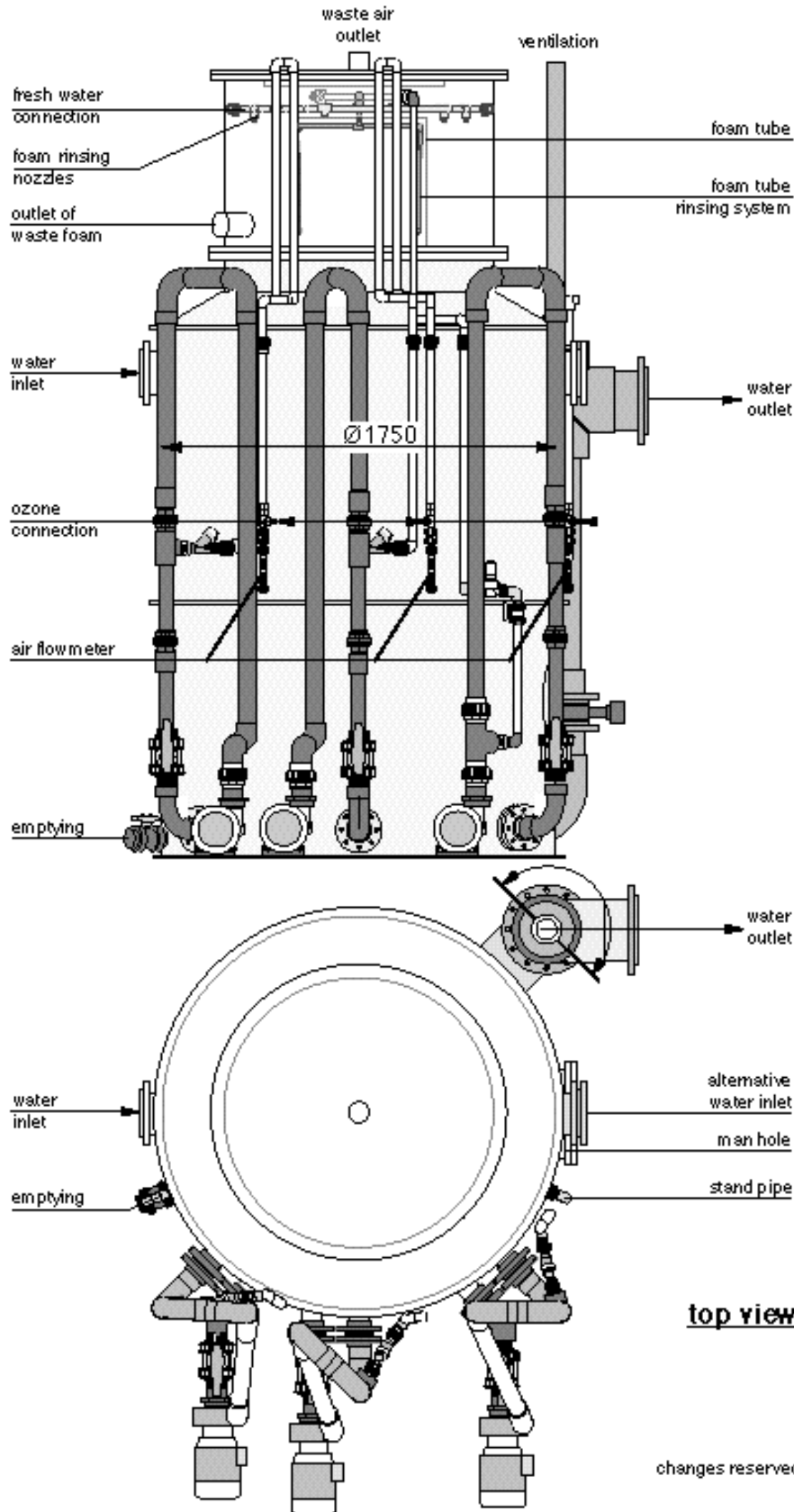
Material	Standard	Optional
Reaction Tank	Polypropylen/grey	Polyethylen/GRP
Foam Beaker	PVC-transparent	
Screws, Nuts	Stainless Steel 1.4301	
Pumps	PP/Glass Fibre	
Face Seal Rings	Carbon/Ceramic/Viton	

Different Dimensions can be realized

\* Recommended Values

Technical Details subject to Alterations

## Helgoland 1750



# Protein Skimmer



## Helgoland 1750

Item No. .9.1750.H<sub>N</sub>

Nominal Height H <sub>N</sub>		3000	3500	4000	4500	5000
Water Flow Rate	m <sup>3</sup> /h	289	346	433	491	577
Retention Time	min	1	1	1	1	1
<b>Water Flow Rate*</b>	<b>m<sup>3</sup>/h</b>	<b>192</b>	<b>231</b>	<b>289</b>	<b>327</b>	<b>385</b>
<b>Retention Time*</b>	<b>min</b>	<b>1,5</b>	<b>1,5</b>	<b>1,5</b>	<b>1,5</b>	<b>1,5</b>
Water Flow Rate	m <sup>3</sup> /h	144	173	216	245	289
Retention Time	min	2	2	2	2	2
Air Intake Capacity	m <sup>3</sup> /h	55	55	55	55	55
Water Volume	l	4810	5770	7220	8200	9620
Operating Weight approx.	kg	6550	7650	9300	10500	12000
Number of Injection Units	pcs	3	3	3	3	3
Total Power Demand	kW	11,4	11,4	11,4	11,4	11,4
Water Demand of the Foam Rinsing	l/h	9,4	9,4	9,4	9,4	9,4

Dimensions:

A	Diameter	mm	1750	1750	1750	1750	1750
B	Total Height	mm	3080	3580	4080	4580	5080
C	Breadth	mm	2850	2850	2850	2850	2850
D	Depth	mm	2250	2250	2250	2250	2250
O	Free Height	mm	>300	>300	>300	>300	>300
E	Inlet ø	mm	d 160	d 160	d 225	d 225	d 225
F	Inlet Height	mm	1650	2150	2650	3150	3650
G	Outlet ø	mm	d 250	d 250	d 315	d 315	d 315
H	Outlet Height	mm	1550	2050	2550	3050	3550
i	Rinsing Water ø	mm	d 32	d 32	d 32	d 32	d 32
K	Rinsing Water Height	mm	2845	3345	3845	4345	4845
L	Foam Outlet ø	mm	d 110	d 110	d 110	d 110	d 110
M	Foam Outlet Height	mm	2320	2820	3320	3820	4320
N	Residual Air Outlet ø	mm	d 90	d 90	d 90	d 90	d 90
P	Manhole ø	mm	d 400	d 400	d 400	d 400	d 400
R	Manhole Height	mm	700	700	700	700	700

Material	Standard	Optional
Reaction Tank	Polypropylen/grey	Polyethylen/GRP
Foam Beaker	PVC-transparent	
Screws, Nuts	Stainless Steel 1.4301	
Pumps	PP/Glass Fibre	
Face Seal Rings	Carbon/Ceramic/Viton	

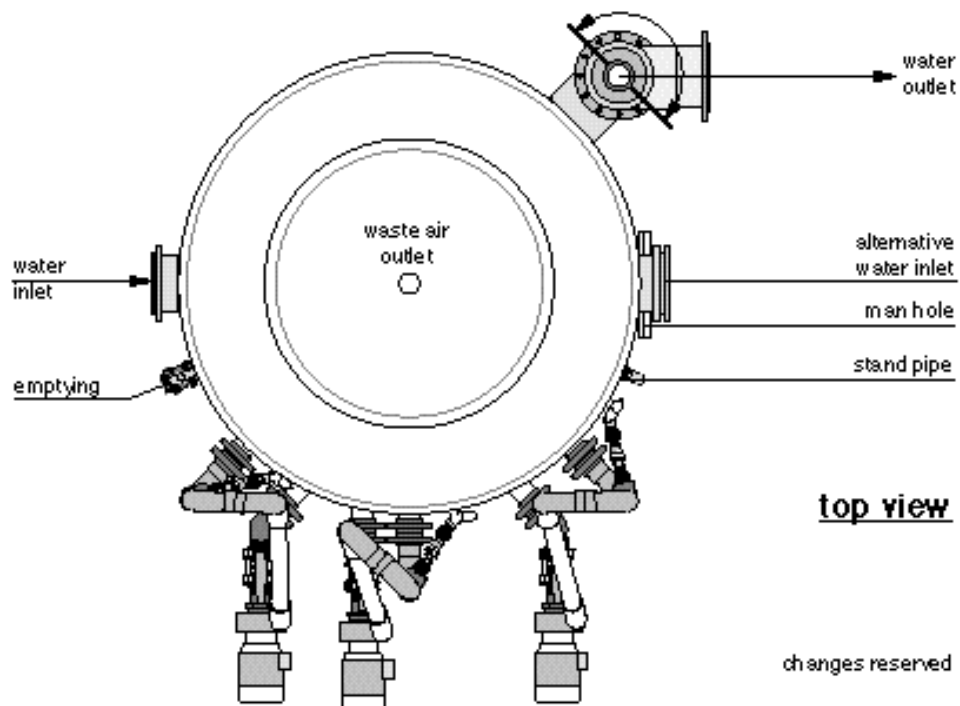
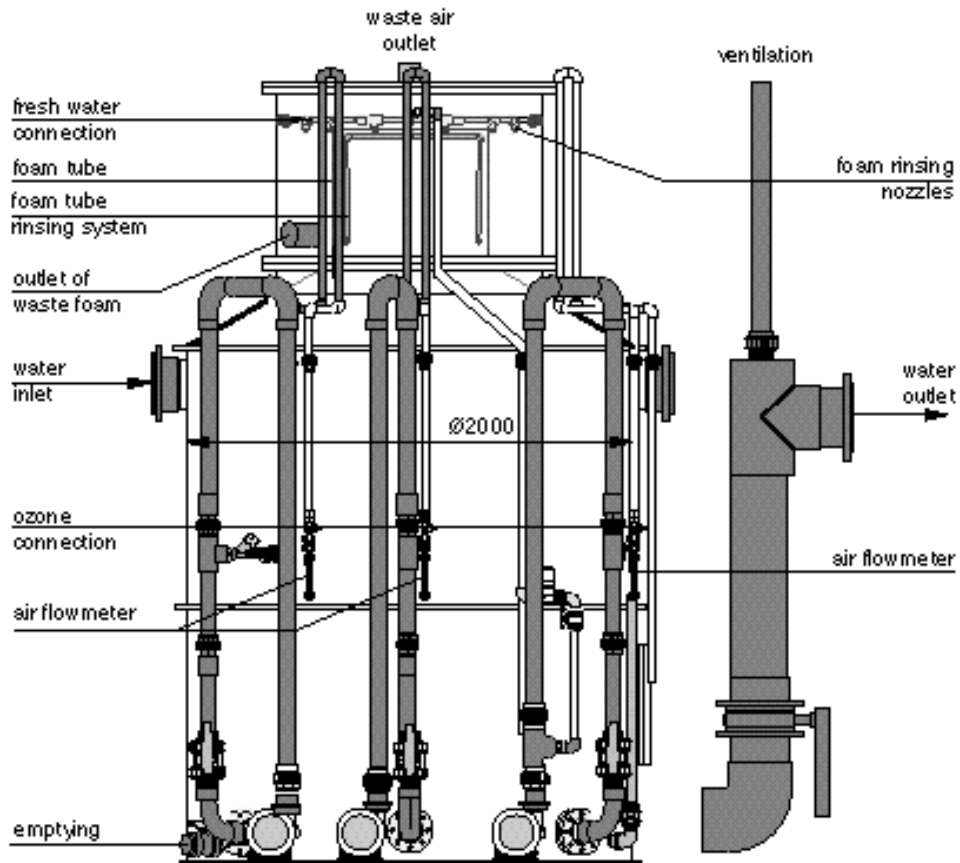
Different Dimensions can be realized

\* Recommended Values

Technical Details subject to Alterations

# Protein Skimmer

## Helgoland 2000



# Protein Skimmer



## Helgoland 2000

Item No. .9.2000.H<sub>N</sub>

Nominal Height H <sub>N</sub>		3000	3500	4000	4500	5000
Water Flow Rate	m <sup>3</sup> /h	377	471	565	660	754
Retention Time	min	1	1	1	1	1
<b>Water Flow Rate*</b>	<b>m<sup>3</sup>/h</b>	<b>251</b>	<b>314</b>	<b>377</b>	<b>440</b>	<b>503</b>
<b>Retention Time*</b>	<b>min</b>	<b>1,5</b>	<b>1,5</b>	<b>1,5</b>	<b>1,5</b>	<b>1,5</b>
Water Flow Rate	m <sup>3</sup> /h	189	236	283	330	377
Retention Time	min	2	2	2	2	2
Air Intake Capacity	m <sup>3</sup> /h	75	75	75	75	75
Water Volume	l	6280	7850	9420	11000	12600
Operating Weight approx.	kg	8600	10500	12500	14200	15800
Number of Injection Units	pcs	3	3	3	3	3
Total Power Demand	kW	11,4	11,4	11,4	11,4	11,4
Water Demand of the Foam Rinsing	l/h	9,4	9,4	9,4	9,4	9,4
Dimensions:						
A Diameter	mm	2000	2000	2000	2000	2000
B Total Height	mm	3080	3580	4080	4580	5080
C Breadth	mm	3100	3100	3100	3100	3100
D Depth	mm	2600	2600	2600	2600	2600
O Free Height	mm	>300	>300	>300	>300	>300
E Inlet ø	mm	d 225	d 250	d 250	d 250	d 250
F Inlet Height	mm	1650	2150	2650	3150	3650
G Outlet ø	mm	d 250	d 315	d 315	d 315	d 315
H Outlet Height	mm	1550	2050	2550	3050	3550
i Rinsing Water ø	mm	d 32	d 32	d 32	d 32	d 32
K Rinsing Water Height	mm	2845	3345	3845	4345	4845
L Foam Outlet ø	mm	d 110	d 110	d 110	d 110	d 110
M Foam Outlet Height	mm	2320	2820	3320	3820	4320
N Residual Air Outlet ø	mm	d 90	d 90	d 90	d 90	d 90
P Manhole ø	mm	d 400	d 400	d 400	d 400	d 400
R Manhole Height	mm	700	700	700	700	700

Material	Standard	Optional
Reaction Tank	Polypropylen/grey	Polyethylen/GRP
Foam Beaker	PVC-transparent	
Screws, Nuts	Stainless Steel 1.4301	
Pumps	PP/Glass Fibre	
Face Seal Rings	Carbon/Ceramic/Viton	

Different Dimensions can be realized

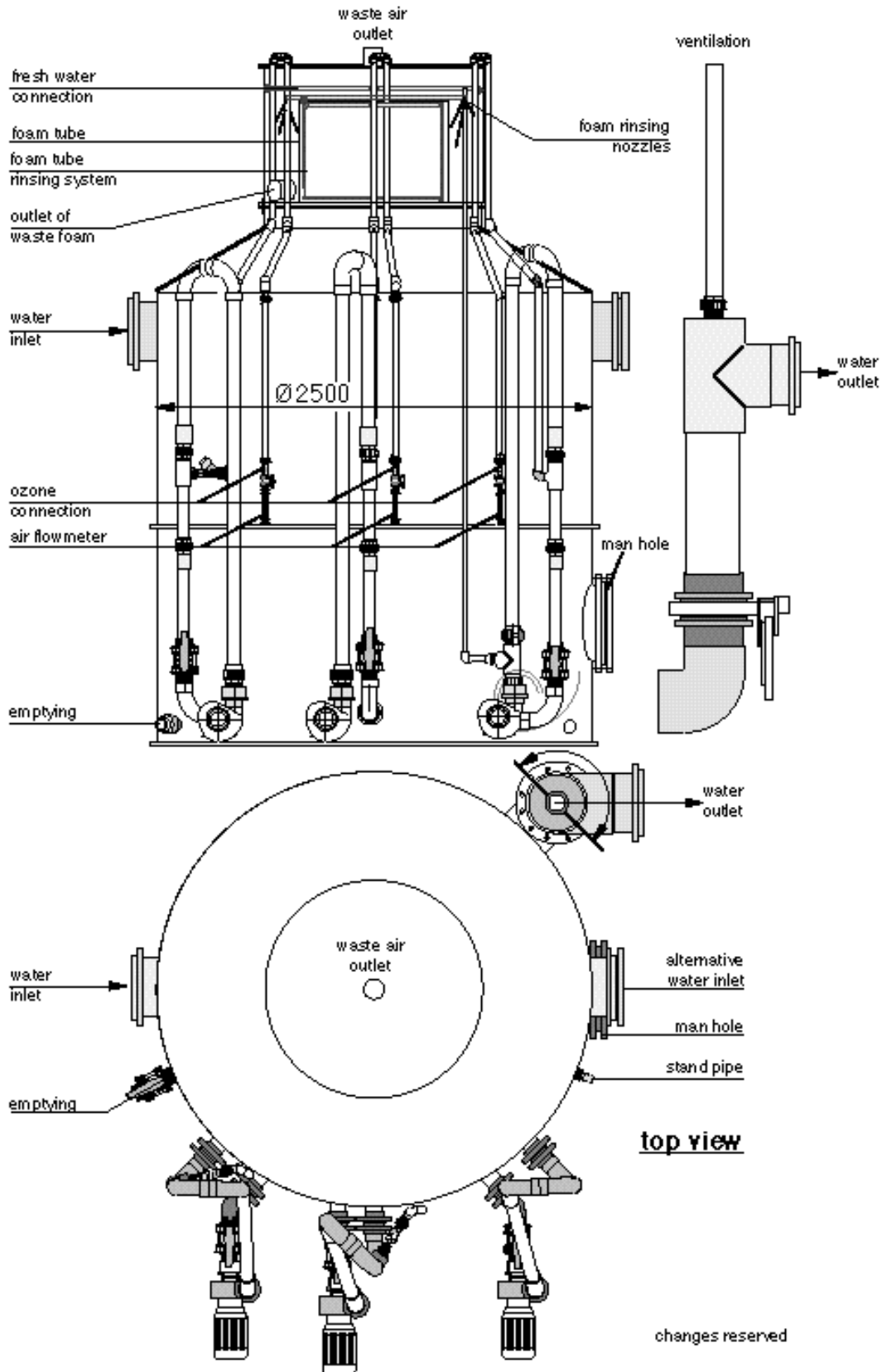
\* Recommended Values

Technical Details subject to Alterations



# Protein Skimmer

## Helgoland 2500



# Protein Skimmer



## Helgoland 2500

Item No. .9.2500.H<sub>N</sub>

Nominal Height H <sub>N</sub>		3500	4000	4500
Water Flow Rate	m <sup>3</sup> /h	707	884	1000
Retention Time	min	1	1	1
<b>Water Flow Rate *</b>	<b>m<sup>3</sup>/h</b>	<b>471</b>	<b>589</b>	<b>668</b>
<b>Retention Time*</b>	<b>min</b>	<b>1,5</b>	<b>1,5</b>	<b>1,5</b>
Water Flow Rate	m <sup>3</sup> /h	353	442	500
Retention Time	min	2	2	2
Air Intake Capacity	m <sup>3</sup> /h	118	118	118
Water Volume	l	11780	14730	16690
Operating Weight approx.	kg	15950	19250	21500
Number of Injection Units	pcs	3	3	3
Total Power Demand	kW	14,6	14,6	14,6
Water Demand of the Foam Rinsing	l/h	9,4	9,4	9,4

Dimensions:

A	Diameter	mm	2500	2500	2500
B	Total Height	mm	3580	4080	4580
C	Breadth	mm	3600	3600	3600
D	Depth	mm	3000	3000	3000
O	Free Height	mm	>300	>300	>300
E	Inlet ø	mm	d 250	d 250	d 315
F	Inlet Height	mm	2150	2650	3150
G	Outlet ø	mm	d 315	d 315	d 315
H	Outlet Height	mm	2050	2550	3050
i	Rinsing Water ø	mm	d 32	d 32	d 32
K	Rinsing Water Height	mm	3345	3845	4345
L	Foam Outlet ø	mm	d 110	d 110	d 110
M	Foam Outlet Height	mm	2820	3320	3820
N	Residual Air Outlet ø	mm	d 90	d 90	d 90
P	Manhole ø	mm	d 400	d 400	d 400
R	Manhole Height	mm	700	700	700

Material	Standard	Optional
Reaction Tank	Polypropylen/grey	Polyethylen/GRP
Foam Beaker	PVC-transparent	
Screws, Nuts	Stainless Steel1.4301	
Pumps	PP/Glass Fibre	
Face Seal Rings	Carbon/Ceramic/Viton	

Different Dimensions can be realized

\* Recommended Values

Technical Details subject to Alterations